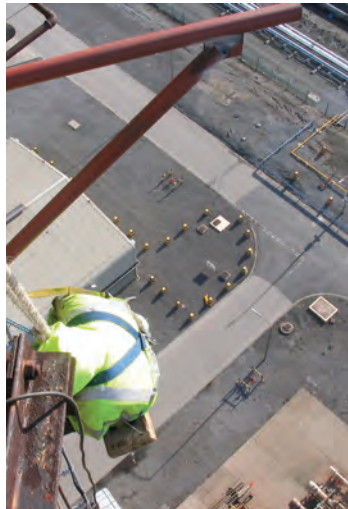


# Special Access Systems

## BASF Industrial Plant Work Scope

### Project

Shutdown inspection highlighted stress fractures to dome top, the cost of fully scaffolding this 70m tower were assessed and Stone Technical were invited to solve the access problem, we performed engineering calculations, wind, load measurements for attaching steeplejack specialist access scaffolding frames bolted to structure, after carefully NDT works to determine suitability. Additionally we erected a Alimak hoist to transport the shutdown work force to the working area, works were on going on a 24 hour turnaround. Works progressed as planned and project was a success.



**HEAD OFFICE:** KELLAW ROAD | DARLINGTON | CO. DURHAM DL1 4YA  
**TEL:** 01325 282794 | **FAX:** 01325 487329 | **MOB:** 07971 173626

**SOUTHERN OFFICE:** EVANS HOUSE | 107 MARSH ROAD | PINNER | MIDDX HA5 5PA | **TEL:** 0208 4296700 | **FAX:** 0208 4296755

**NEWCASTLE OFFICE:** TEL/FAX: 0191 496 1540

**E-MAIL:** ENQUIRIES@STONESERVICESUK.COM

**WEB:** WWW.STONETECHNICALGROUP.CO.UK  
 WWW.STONESERVICESUK.COM

**FREEPHONE: 0800 0480 151 FAX: 0800 0480152**



**STONE**  
 TECHNICAL SERVICES

